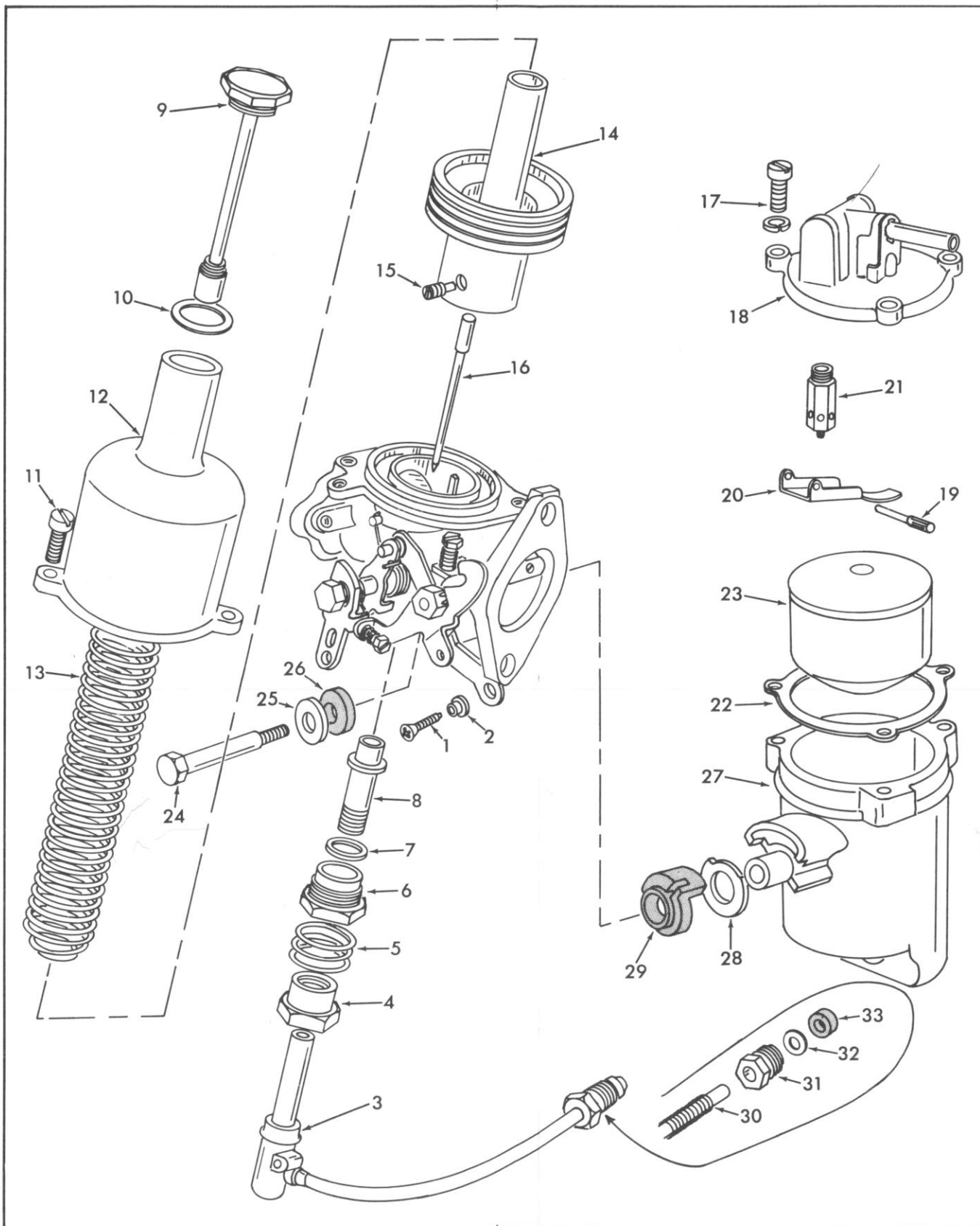


## GENERAL EXPLODED VIEW

THE GENERAL DESIGN AND PARTS SHOWN WILL VARY TO INDIVIDUAL UNITS COVERED ON THIS INSTRUCTION SHEET

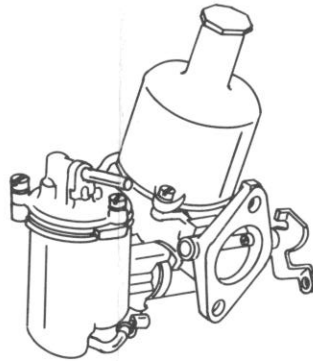


### NOMENCLATURE

- |  |   |  |  |
|--|---|--|--|
| <p>1. SCREW - LINK TO JET<br/>                 2. BUSHING - LINK TO JET SCREW<br/>                 3. JET ASSEMBLY<br/>                 4. NUT - JET ADJUSTING<br/>                 5. SPRING - JET LOCKING<br/>                 6. NUT - JET LOCKING<br/>                 7. WASHER - JET BEARING<br/>                 8. BEARING - JET<br/>                 9. CAP &amp; DAMPER ASSEMBLY<br/>                 10. WASHER - CAP</p> | <p>11. SCREW - CHAMBER TO BODY (2)<br/>                 12. CHAMBER - PISTON<br/>                 13. SPRING - PISTON<br/>                 14. PISTON<br/>                 15. SCREW - NEEDLE LOCKING<br/>                 16. NEEDLE<br/>                 17. SCREW &amp; LOCKWASHER - FLOAT CHAMBER COVER (3)<br/>                 18. COVER - FLOAT CHAMBER<br/>                 19. PIN - FLOAT LEVER</p> | <p>20. LEVER - FLOAT<br/>                 21. NEEDLE &amp; SEAT ASSEMBLY<br/>                 22. GASKET-FLOAT CHAMBER COVER<br/>                 23. FLOAT<br/>                 24. BOLT - FLOAT CHAMBER<br/>                 25. WASHER - STEEL<br/>                 26. WASHER - RUBBER</p> | <p>27. FLOAT CHAMBER<br/>                 28. WASHER - SUPPORT<br/>                 29. GROMMET - RUBBER<br/>                 30. PLASTIC FUEL LINE WITH WIRE SPRING GUARD<br/>                 31. NUT - FUEL LINE<br/>                 32. WASHER - BRASS<br/>                 33. WASHER - RUBBER</p> |
|--|---|--|--|

# INSTRUCTION SHEET

## S. U. CARBURETORS TYPE HS



### DISASSEMBLY

USE EXPLODED VIEW ON REVERSE SIDE AS A GUIDE. THE NUMERICAL SEQUENCE MAY GENERALLY BE FOLLOWED TO DISASSEMBLE UNIT FAR ENOUGH TO PERMIT CLEANING AND INSPECTION. ONLY RUBBER MOUNTED FLOAT CHAMBERS NEED TO BE REMOVED.

### CLEANING

CLEANING MUST BE DONE WITH CARBURETOR DISASSEMBLED. SOAK PARTS LONG ENOUGH TO SOFTEN AND REMOVE ALL FOREIGN MATERIAL. USE (1) A CARBURETOR CLEANING SOLVENT, (2) LACQUER THINNER OR (3) DENATURATED ALCOHOL. MAKE CERTAIN THE THROTTLE BODY IS FREE OF ALL HARD CARBON DEPOSITS. WASH OFF IN SUITABLE SOLVENT. BLOW OUT ALL PASSAGES IN CASTING WITH COMPRESSED AIR AND CHECK CAREFULLY TO INSURE THOROUGH CLEANING OF OBSCURE AREAS.

CAUTION: DO NOT SOAK RUBBER, LEATHER OR PLASTIC PARTS IN SOLVENT.

### REASSEMBLY

REASSEMBLE IN REVERSE ORDER OF DISASSEMBLY. NOTE SPECIAL INSTRUCTIONS AND ADJUSTMENTS.

